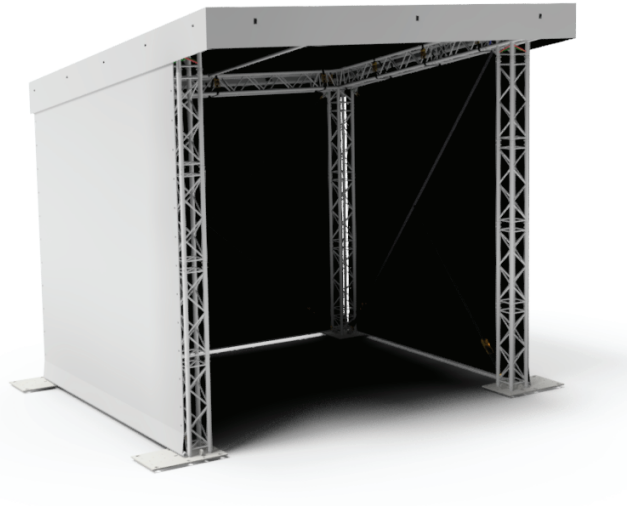
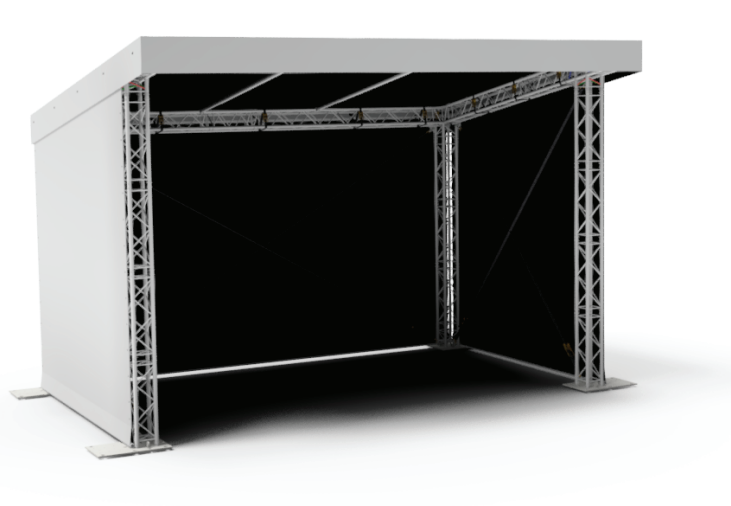
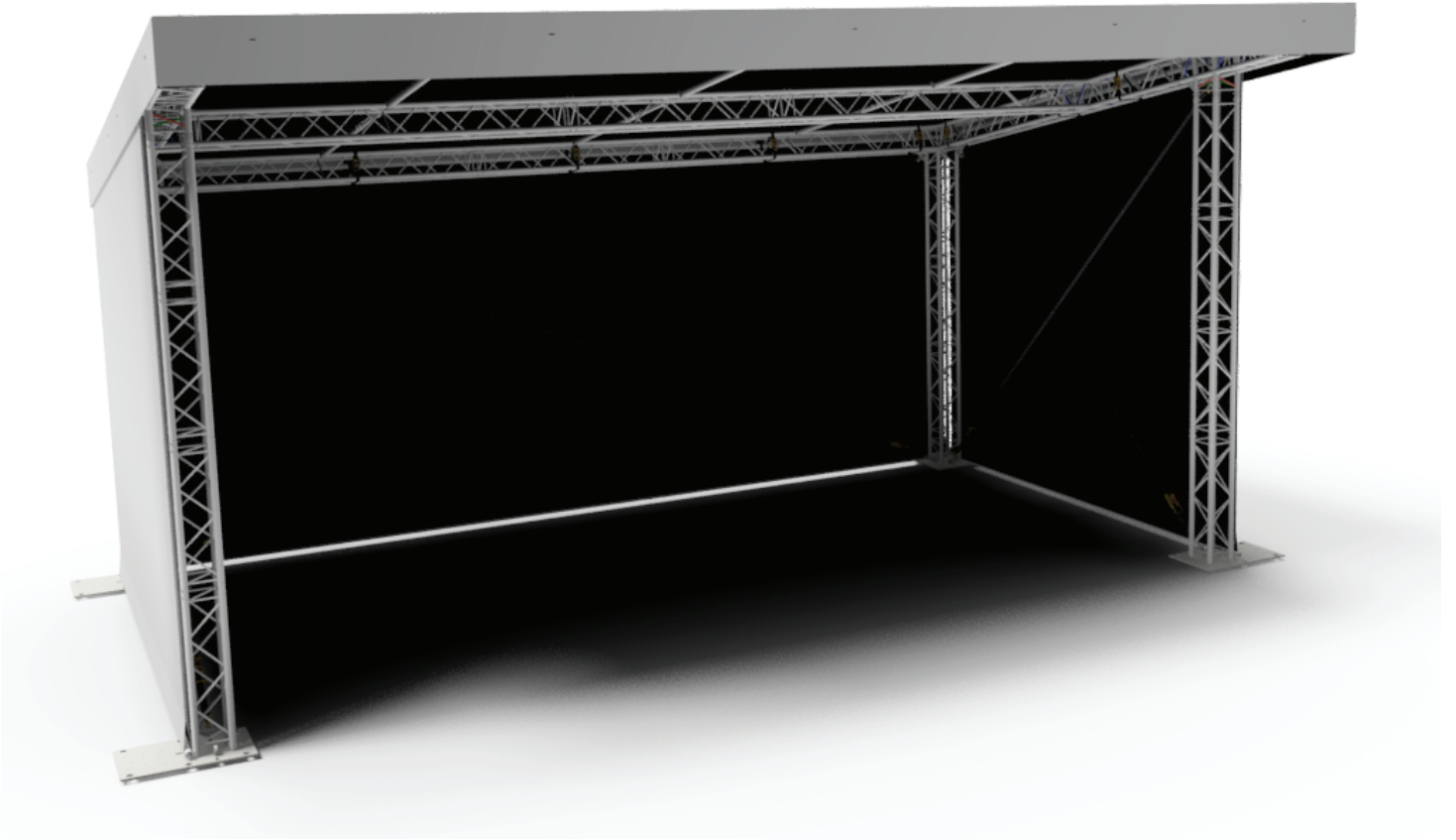


# MINI FLAT ROOF



## PRODUCT DATA SHEET

The Mini Flat Roofs are versatile structures based on standard truss elements and fixed welded corners. They can be used as small event stages, FOH structures, or as a detached cover for your terrace. The three standard sizes are constructed of H30V multi-purpose truss elements. The structure stands on specially designed steel base sections with integrated rigging points.

Due to its size, you can put the ballast immediately on top of the base. It also has the possibility to be used in combination with ground anchors. Different configurations can be achieved by just adding standard truss elements, which makes it easy to change the size. All available standard structures are calculated according to the latest European regulation for temporary structures. Other sizes will be available on request.

### Roof structure

Towers	H30V
Main grid	H30V

### TECHNICAL SPECIFICATIONS - ARC ROOF

Dimensions	8 x 6 m (26'24" x 19'68")
	6 x 4 m (19'68" x 13'12" )
	4 x 4 m ( 13'12" x 13'12" )
Loading capacity	8 x 6 m approx. 3120kg
	6 x 4 m approx. 1600kg
	4 x 4 m approx. 1280k
Total weight	8 x 6 m approx. 700kg
	6 x 4 m approx. 530kg
	4 x 4 m approx. 500kg
Transportation volume	8 x 6 m approx. 6m3
	6 x 4 m approx. 6m3
	4 x 4 m approx. 7m3
Max. wind speed	28,4m/second, 63,3 mph

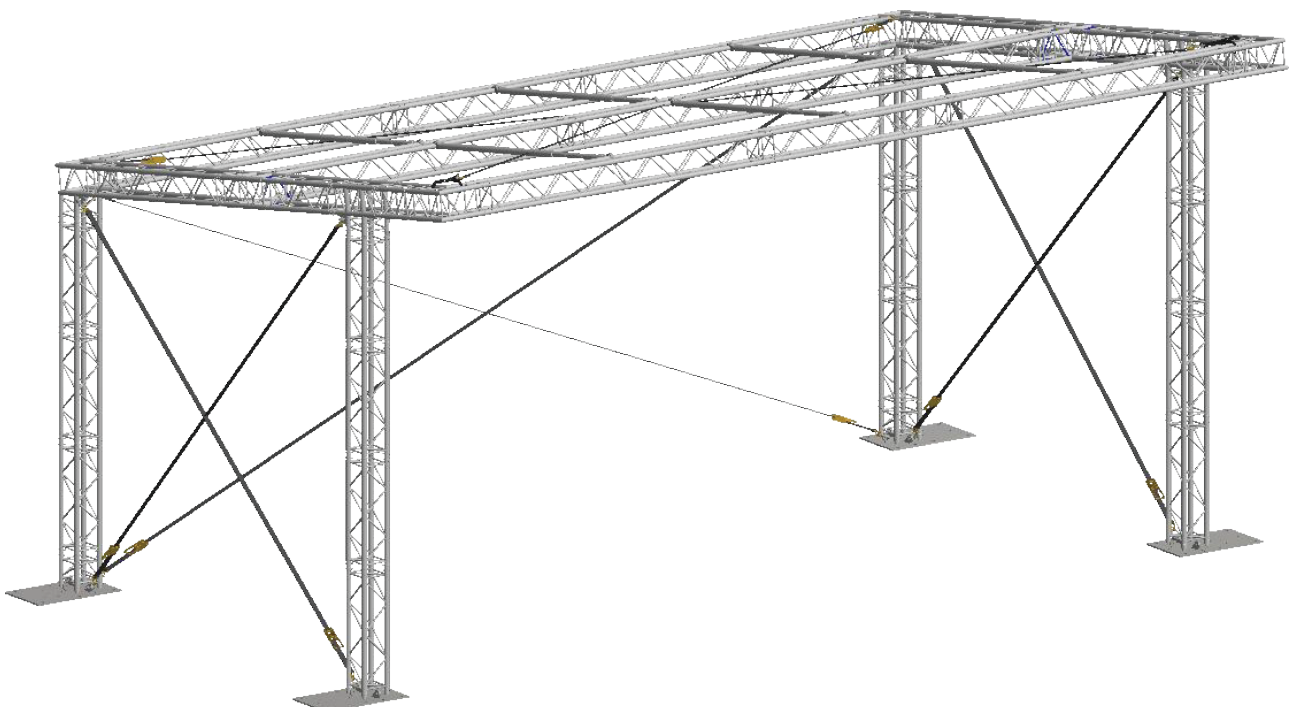
Consult Prolyte for up-to-date information on loading capacity, wind speed, total weight and transportation volume in line with the latest regulations.

### Advantages:

- Easy to handle
- Standard components
- Ideal for smaller events

### OPTIONS

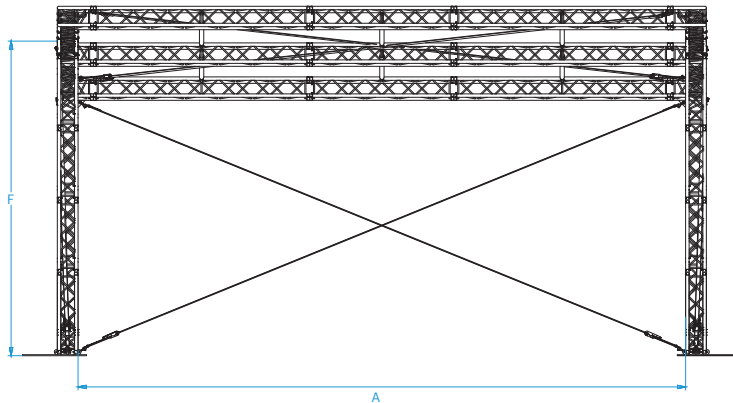
Canopy	Side and up
Canopy colour	Standard: outside grey, inside black (other colours possible)
Soundwings	No, but PA of 250kg is possible in front of the front towers
Ballast	Several possibilities on request depending on construction. For example, water tanks, concrete blocks.
Staging	No
Groundring	No



# MINI FLAT ROOF



Front view



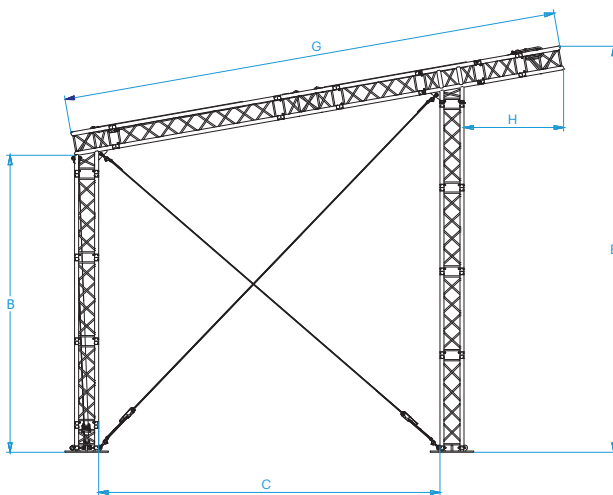
## MINI-FLAT ROOF

8 x 6 m      3 Spans

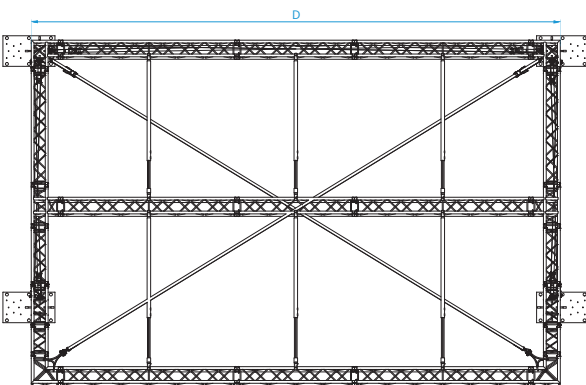
6 x 6 m      2 Spans

4 x 4 m      2 Spans

Side view



Top view



## MINI-FLAT ROOF SYSTEM

Stage measurements		A		B		C		D		E		F		G		H	
8 x 6 m	26'24" x 19'68"	8,43 m	27'65"	3,55 m	11'64"	4,07 m	13'35"	9,00 m	29'52"	4,85 m	15'91"	4,36 m	14'3"	5,93 m	19'45"	1,19 m	3'9"
6 x 4 m	19'68" x 13'12"	6,14 m	20'14"	3,54 m	11'61"	3,37 m	11'05"	6,71 m	22'01"	4,64 m	15'22"	4,23 m	13'87"	4,71 m	15'45"	0,70 m	2'
4 x 4 m	13'12" x 13'12"	4,14 m	13'58"	3,54 m	11'61"	3,37 m	11'05"	4,71 m	15'45"	4,64 m	15'22"	4,23 m	13'87"	4,71 m	15'45"	0,70 m	2'