

Assembly manual ProTrac

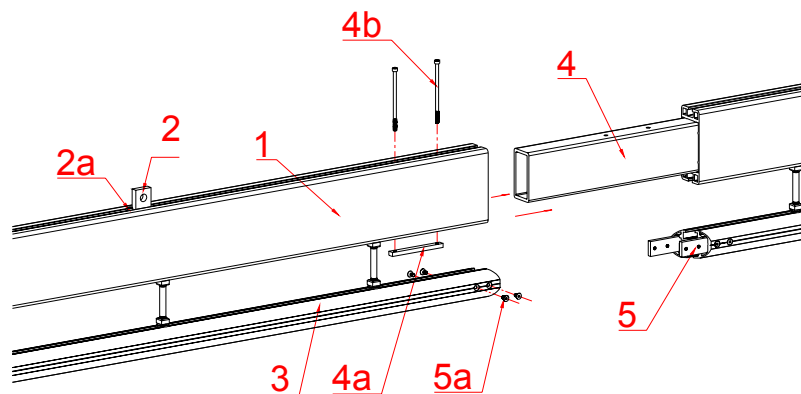
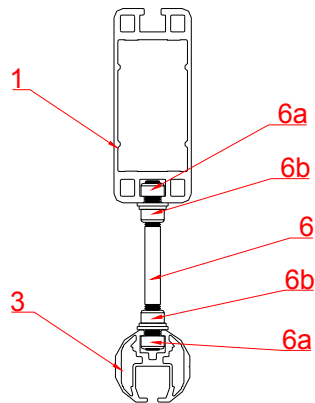


**juli 2003
versie 1**

**Manufactures
Prolyte Products BV,
2003**

patent numberr: NL 1021354, world wide patent pending

ASSEMBLY MANUAL PROTRAC



2.1 Samenstellende onderdelen:

- | | |
|---|------------------------|
| 1. Main beam 149x 60mm, | Art: PT-L... |
| 2. Lifting point (hole diameter 15mm) | Art: PT-SP-SP-001 |
| 2a. Hexagon sockethead M8x16, DIN 916 | Art: PT-BM-M8x16 |
| 3. Bottom profile, 60mm with integrated Helm 100 rail | Art: PT-T60H-L... |
| 4. Connection beam (, 6082T6, | Art: PT-CON-01 |
| 4a Connecting plate top profiel 2x M6 hole | Art: PT-SP-120x12 |
| 4b Hexagon Bolt M6x120, DIN 912 | Art: BM-M6x150 IB |
| 5. Connecting plate bottom profile | Art: PT-SP-120x30 |
| 5a Counter sunk sockethead bolt M6x12, DIN 7991 | Art: BM-M6x12-IB-CS-B |
| 6. Steel rod | Art: PT-BM-12x130 |
| 6a Square nut M12, DIN 557 | Art: PT-BM-M12-SN |
| 6b RIPP self securing bolt M12 | Art: PT-BM-M12-SL-RIPP |
| 7. Endcap main profile (not shown) | Art: PT-ACC-001 |
| 8. Endcap bottom profile 60mm (not shown) | Art: PT-ACC-002 |

ASSEMBLY OF STEEL RODS

- 1) Turn the special shoulder bolts (6b) on the steel rods (6) as far as possible Note : The wide shoulder should point outwards.
- 2) Turn the square M12 nuts (6a) on the rods till they are flush with the outside

ASSEMBLY OF A PROTRAC SECTION

For the ease of assembly a 7m long working table with carpet on top at 90cm height is very use full

Determine up front who many lengths you need to equip with connecting beams (4 and 5)

- 1) Slide the pre mounted steel rods in the main profile place them on 500mm distances starting 250mm from the end of each element.
- 2) Fasten now only the shoulder head bolts on the side of the main profile so that the steel rods will stay in place. Turn them hand tight
- 3) Slide the bottom profile over the square nuts on the bottom of the steel rods. First spray the profile with a kind of lubricant.
- 4) Make sure that the end of the main profile and bottom profile are in one line.
- 5) Turn all shoulder head bolts (6b) with a torque wrench set at 80Nm
- 6) Put the lifting point (2) at its correct position. Tighten the bolt (2a). no torque setting is required . In case the 90 degree suspension is used the pulley block and the distance strip need to be slide in as well
- 7) Put the connection plates (5) in the bottom profile. Make sure that the countersunk bolts (5a) are not tighten. This gives the headroom needed when assembling the whole protract length
- 8) Put the connection beam (4) in the main profile. Make sure that the bolts (4b) are not tighten. This gives the headroom needed when assembling the whole ProTrac . Bots can be used in combination with either number 4a or by means of normal M6 self locking nuts

ASSEMBLY OF A COMPLETE PROTRAC

- 1) Place them in line on the stage floor. Slide them together and put the bolts 5a and 4b in place. Tighten now all bolts. No torque setting is required.
- 2) Make sure all lifting points (2) are on the correct spot. Connect the steel wires
- 3) Adjustment of the steel wires should be done according to the specs of the supplier of these
- 4) When applicable ,put the end-caps in place