



PROLYTE STRUCTURES

Product NEWS



H40R TRUSS

H40R truss: the perfect marriage

What if we were to combine the best features of our top selling trusses and merge them into something new? Brand Manager Eric Laanstra frequently received enquiries for a smaller truss with a higher loading capacity and has masterminded the perfect solution. With his team of engineers he has designed the H40R truss, a rectangular standard H40 truss with a very clever programme of specifications based on the H30V, H40V and S36R truss.

Compact and strong

The H40R has three-sided webbing. The thicker braces on the bottom side allow easy mounting of automated luminaires/moving heads and central loading, reducing the torsion effect resulting from one-sided loading in standard trusses. The spigot orientation follows that of the S series truss, allowing easy assembly while the truss is still on the floor. The H40R measures 387 mm high by 287 mm wide. The diagonals are placed to allow room for a 30D truss to rest on the bottom chords.

Its compact design makes the H40R easier and more cost effective to transport. The loading rate is comparable to the H40V, although lateral forces are limited due to the three-sided webbing. The H40R is available in all standard lengths as well as a box-corner.

SPECIFICATIONS:

Main chords	48x3 mm
Bottom braces	48x3 mm
Diagonals	20x2 mm
Coupling system:	CCS6

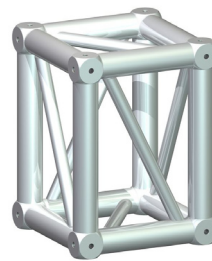
AVAILABLE IN:

Lengths:	All standard lengths
Corners:	BOX-40R

MEASUREMENTS:

387 mm height
287 mm width

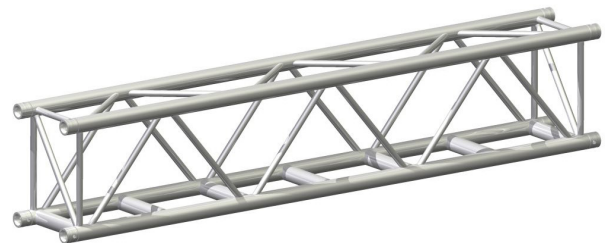
BOX-40R-0



H40R GRID



H40R-L200



Prolyte Group HQ
Leek, Netherlands
info@prolyte.com

Prolyte Products UK Ltd
Wakefield, England
info@prolyte.co.uk

Prolyte Products GmbH
Emsdetten, Germany
info@prolyte.eu

Prolyte Products Romania
Slatina, Romania
info@prolyte.ro



WWW.PROLYTE.COM