

# PROLYTE

**FlexCart**

User manual



**Original instructions**

**DN00195 Issue 1**

**June 2025**

**Manufacturer:**

Area Four Industries Česko s.r.o.

Špindlerova 286

413 01 Roudnice nad Labem

Czech Republic

T +420 416 810 800

[sales@prolyte.com](mailto:sales@prolyte.com)

We have made every effort to ensure the accuracy of this manual. No liability will be accepted for errors. We reserve the right to change or alter our products or manuals without prior notice.

No part of this manual may be reproduced in any form or by any means without prior written permission.

If you have a warranty claim, malfunction or spare part inquiry, contact your point of sale or the manufacturer.

If you have comments or improvement ideas for this document, please contact us at the e-mail address on the back cover. All comments and ideas will be carefully considered in the future development of the product or this document.

## Contents

1	Introduction.....	5
1.1	About this product.....	5
1.2	Related information .....	5
1.3	About this manual .....	5
1.4	Terminology.....	6
1.5	Standards.....	8
2	Safety .....	8
2.1	Electrical safety.....	9
2.2	Personal protective equipment.....	9
3	Limitations of use.....	9
3.1	Environmental influences .....	9
4	Transport, handling and storage .....	10
5	Identification.....	10
6	Technical specifications.....	11
6.1	Load capacity.....	11
7	Assembling and disassembling the PROLYTE FlexCart .....	11
7.1	Safety when assembling and disassembling.....	11
7.2	Required tools.....	11
7.3	Assembling a FlexCart.....	12
7.4	Disassembling a FlexCart.....	15
8	Approved accessories.....	16
8.1	FlexCart rack set – left and right .....	16
8.2	FlexCart decks for boxes .....	16
8.3	FlexCart light bar .....	20
8.4	FlexCart tube for cable holders.....	20
8.5	FlexCart cable holder.....	21
8.6	FlexCart protective cover .....	21
9	FlexCart sets.....	22
9.1	PROLYTE FlexCart for lights.....	22
9.2	PROLYTE FlexCart for boxes.....	23
9.3	PROLYTE FlexCart for boxes, lights and cables.....	24
10	Discard criteria for individual components.....	25
11	Warranty .....	25

## Change history

Issue	Date	Changes
1	June 2025	First issue

## 1 Introduction

This manual is intended for users of the PROLYTE FlexCart (FlexCart).

### 1.1 About this product

The PROLYTE FlexCart is an aluminium frame cart consisting of extruded profiles for various transport and storage solutions. It has dimensions of 1800×1800×800 mm (70.87×70.87×31.50 in), making it ideal for transporting by truck, and an overall loading capacity of 400 kg (881 lbs).

The PROLYTE FlexCart can be ordered with 100-mm (3.94-in) wheels or 160-mm (6.30-in) wheels. Both wheel variants are equipped with brakes. The brakes are applied by pressing the catch down with your foot and are released again by lifting the catch up with your foot. The PROLYTE FlexCart is available with various accessories that customers can configure themselves according to their needs. Alternatively, predefined sets can be ordered for specific purposes, such as transporting only boxes, only lights or boxes, lights and cables (see Section 9).

The PROLYTE FlexCart can be used flexibly thanks to its profile structure, which enables numerous connection points. Each outer corner is equipped with a durable rubber bumper for additional protection during transport and storage. Each rubber bumper has a plastic insert bearing the company logo. The frame can be completed with an optional panel for an inventory list.

Assembly and disassembly are quick and simple, and only require a few basic tools (see Section 7.2).

We have paid special attention to product safety when designing the product.

The manufacturer bears no liability for indirect consequential damage or financial loss. The manufacturer bears no liability for any changes made to the product or for any damage resulting from such changes.

### 1.2 Related information

For more information on the product, see: <https://www.prolyte.com/products/prolytestructures-nav/accessories/flex-cart>.

### 1.3 About this manual

Before working with the products, read this manual carefully and pay attention to the information provided. Use this manual to familiarise yourself with the products, their proper use and the safety regulations.

This manual assumes that you have been trained, or work under the control of a competent or qualified person who has been trained, in safety and assembly.

#### 1.3.1 Safety conventions



Indicates a hazardous situation which, if not avoided, will result in death or serious injury. This signal word is limited to the most extreme situations.



Indicates a hazardous situation which, if not avoided, could result in death or serious injury.

## ! CAUTION

Indicates a hazardous situation which, if not avoided, could result in minor or moderate injury.

## NOTICE

Indicates information that is considered important but which is not hazard-related.

### 1.4 Terminology

Term	Definition
Abrasion	Loss of material due to wear.
Allen key	An L-shaped metal bar with a hexagonal head at each end, used to turn bolts and screws having hexagonal sockets.
Allen screw	A screw that has a hexagonal cross section in the head, designed to be turned using an Allen key.
Bent element	A component or assembly that has permanent deviation from the intended centre line.
Competent person	A person who is capable of identifying existing and predictable hazards in the workplace and who is authorised to take prompt corrective measures to eliminate them.
Crack	A crevice type of discontinuity in a material.
Equipotential bonding	Joining together metalwork that is or may be earthed so that it is at the same potential (i.e. voltage) everywhere.
Frame	A basic frame consisting of the top and bottom frame elements and 2 side frame elements. See Figure 1.
Identification sticker	A sticker on the product containing several items of information about the product.
Knurled knob	A knurled knob is a knob with a knurled outside surface. This makes it easier to tighten by hand.
Qualified person	A person who, by possession of a recognised degree or certificate of professional standing, or who by extensive knowledge, training and experience, has successfully demonstrated the ability to solve problems relating to the subject matter or work. A qualified person supervises the competent persons. See "Competent person".
Repetitive use	Assembling and disassembling the same modules or assemblies on multiple occasions.
User	A person or a company who or which assembles or uses the products.

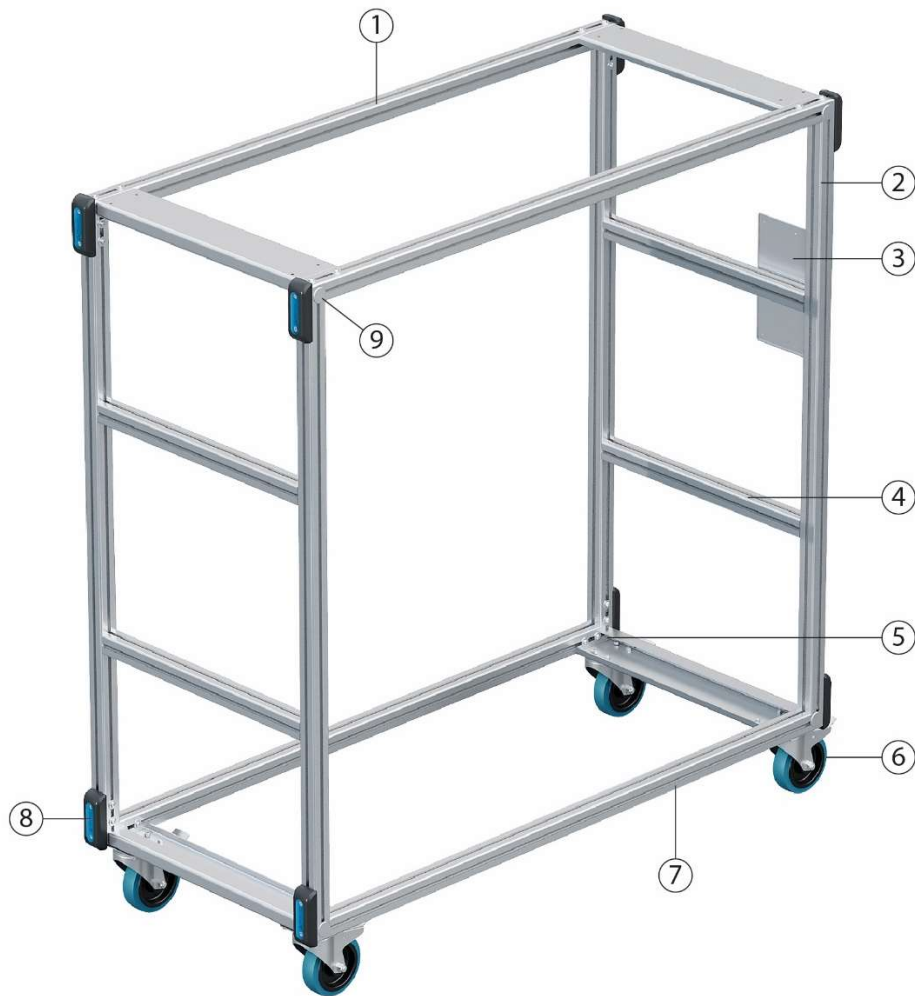


Figure 1: PROLYTE FlexCart

- |   |                                 |   |                                       |
|---|---------------------------------|---|---------------------------------------|
| 1 | Top frame element               | 6 | Wheel with brake                      |
| 2 | Side frame element              | 7 | Bottom frame element                  |
| 3 | Panel for inventory list        | 8 | Bumper                                |
| 4 | Horizontal profile with channel | 9 | Plastic cap (see Figure 2 for detail) |
| 5 | Metal corner supports           |   |                                       |

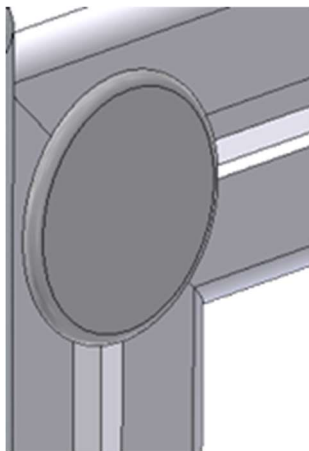


Figure 2: Plastic cap with customer logo option

## 1.5 Standards

### NOTICE

It is the sole responsibility of the owner or provider to check with the local authorities whether the legislation used by PROLYTE is acceptable in the country of use.

The following standards are taken into consideration for manufacturing, design and use:

- 305/2011/EC, European Construction Product Regulation
- EN 1990, Eurocode 0: Basis of structural design
- EN 1991, Eurocode 1: Actions on structures
- EN 1999, Eurocode 9: Design of aluminium structures
- EN 1090-1, Execution of steel structures and aluminium structures – Part 1: Requirements for conformity assessment of structural components
- EN 1090-3, Execution of steel structures and aluminium structures – Part 3: Technical requirements for aluminium structures
- EN 10042:2006, Arc-welded joints in aluminium and its weldable alloys – Quality levels for imperfections
- EN ISO 3834-1 & 3, Quality requirements for welding – Fusion welding of metallic materials – Part 1: Guidelines for selection and use; Part 3: Standard quality requirements
- EN 754 (all parts), Aluminium and aluminium alloys – Cold drawn rod/bar and tube
- EN 755 (all parts), Aluminium and aluminium alloys – Extruded rod/bar, tube and profiles
- EN 515:2017, Aluminium and aluminium alloys – Wrought products – Temper designations
- EN 573 (all parts), Aluminium and aluminium alloys – Chemical composition and form of wrought products
- EN 10204:2004, Metallic products – Types of inspection documents

## 2 Safety

### NOTICE

Read these safety texts carefully before working with the products.

### NOTICE

Make sure manuals are available at all times for all users and employees.

### WARNING

The technical specifications should never be exceeded.

### WARNING

Do not use damaged or malfunctioning parts.

### WARNING

Mark any damaged or worn material clearly and discard the material immediately.

### WARNING

Do not overload the FlexCarts.

Overloading could cause them to fall over and cause personal injuries or property damage.



## 2.1 Electrical safety

### 2.1.1 Equipotential bonding



#### ELECTRICAL HAZARD

Metal structures of FlexCarts that are in contact with electrical equipment could develop dangerous touch voltages in the event of an electrical fault. Before energising any of the electrical equipment, the user must ensure that the FlexCart structure is properly earthed. This applies to all elements made of electroconductive material that have equipment placed on or attached to them, or across wire and cable runs that, if damaged, could make electrical contact with metal parts. Such contact can be made with clips, pipe clamps, screw joints or when using special single-pole locking connectors.

## 2.2 Personal protective equipment

For health and safety reasons, people moving, assembling, disassembling, maintaining or transporting the products should wear adequate personal protective equipment such as, but not limited to, gloves, hard hats and safety shoes.

All people working with FlexCarts should be instructed and informed about the correct usage and possible dangers before use.



#### PERSONAL INJURY HAZARD

Always wear hard hats, safety shoes and protective gloves when moving, assembling, disassembling, maintaining or transporting the products.



#### PERSONAL INJURY HAZARD

Comply with local noise level regulations when assembling and disassembling the products.



#### PERSONAL INJURY HAZARD

Comply with local regulations concerning the maximum weight allowed per person when carrying or moving the products.

## 3 Limitations of use

The FlexCarts and their components must always be used within the specified loading capacities. Refer to the table in Section 6.1 for these loading capacities.

Use the products only for their specified purpose. Any use other than the specified use is regarded as misuse. The user or operator, not the manufacturer, is liable for any damage or injury resulting from such cases of misuse.

### 3.1 Environmental influences

#### 3.1.1 Temperature

FlexCarts can be used at temperatures from -20°C to +80°C (-4°F to 176°F). However, take special care if FlexCarts are used at temperatures below 0°C (32°F).

### 3.1.2 Aggressive environments

Take special care when FlexCarts are used in, or in the vicinity of, aggressive environments. The aluminium alloys used in the FlexCarts might not be suitable for these environments.

The alloy that is used has good properties in saltwater environments, but oxidation can occur on the surface. Clean the FlexCarts regularly with fresh water or a dedicated protection product.

## 4 Transport, handling and storage

### CAUTION

PERSONAL INJURY HAZARD

Vertical transportation or storage of the products can be hazardous due to the products falling over.

### WARNING

PERSONAL INJURY HAZARD

Always wear hard hats, safety shoes and protective gloves when moving, assembling, disassembling, maintaining or transporting the products.

### WARNING

PERSONAL INJURY HAZARD

Always apply the brakes on the wheels of the FlexCart when it is being filled and emptied or while stationary or in transit. Otherwise, the FlexCart could move unexpectedly and injure persons or cause property damage.

Handle the products with care.

Make sure that the products cannot move or shake during transport. The abrasive motion of moving or shaking can lead to severe damage.

## 5 Identification

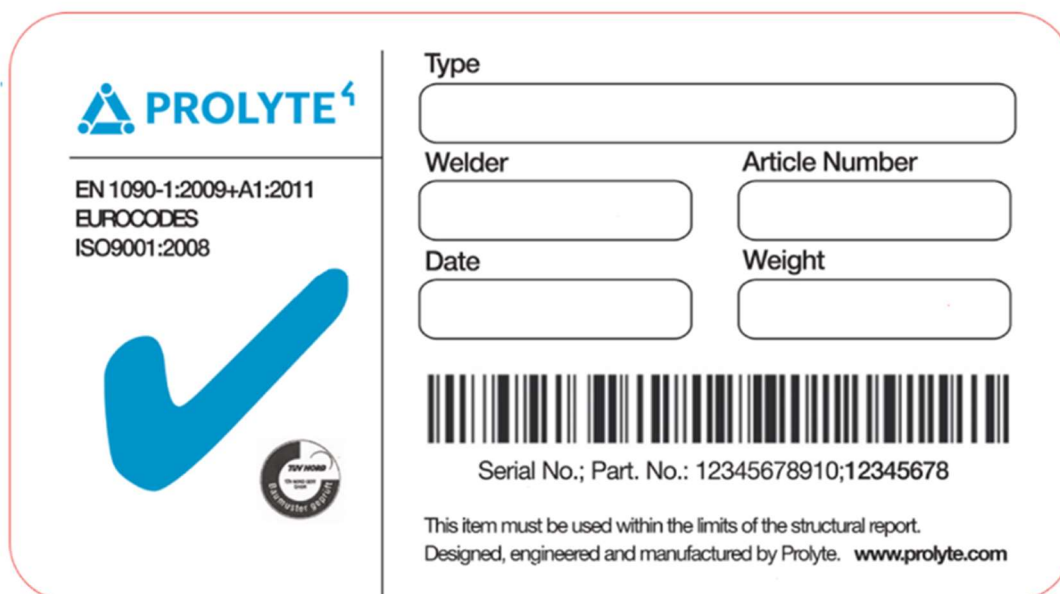
PROLYTE products can be recognised by identification stickers which are attached to all products.

### CAUTION

Make sure only PROLYTE original components are used. For more information, contact your distributor or the manufacturer.

### NOTICE

An identification sticker is always delivered with the product. Replace any missing identification stickers. Contact the manufacturer or its representative for information on the correct procedure.



The sticker is divided into two main sections. The left section contains the PROLYTE logo, the text 'EN 1090-1:2009+A1:2011', 'EUROCODES', 'ISO9001:2008', a large blue checkmark, and a circular TÜV NORD certification logo. The right section contains a 'Type' label above a text box, 'Welder' and 'Article Number' labels above text boxes, 'Date' and 'Weight' labels above text boxes, a barcode, and the text 'Serial No.; Part. No.: 12345678910;12345678'. At the bottom, it states 'This item must be used within the limits of the structural report. Designed, engineered and manufactured by Prolyte. www.prolyte.com'.

Figure 3: Example of a PROLYTE identification sticker

## 6 Technical specifications

### 6.1 Load capacity

The PROLYTE FlexCarts and their components have the following loading capacities. These loading capacities must not be exceeded.

Component	Loading capacity (max.)
Overall PROLYTE FlexCart	400 kg (881.8 lbs)
FlexCart light bar	100 kg (220.5 lbs)
FlexCart tube for cable holders	200 kg (440.9 lbs)
FlexCart cable holder	20 kg (44.1 lbs) per side
FlexCart deck for boxes (bottom level)	100 kg (220.5 lbs)
FlexCart deck for boxes (upper level)	100 kg (220.5 lbs)

## 7 Assembling and disassembling the PROLYTE FlexCart

### 7.1 Safety when assembling and disassembling

A competent person or sufficiently instructed personnel under the supervision of a competent person should always assemble the product.

Before assembly, use and disassembly, the competent person is responsible for the following, amongst other tasks:

- Carrying out all of the instructions as described in this manual.
- Instructing the people carrying out assembly and disassembly.

### 7.2 Required tools

- Allen keys: 5, 6 and 8 mm (0.20, 0.24 and 0.31 in)
- Spanners: 10 and 13 mm (0.39 and 0.51 in)
- Rubber mallet

### 7.3 Assembling a FlexCart

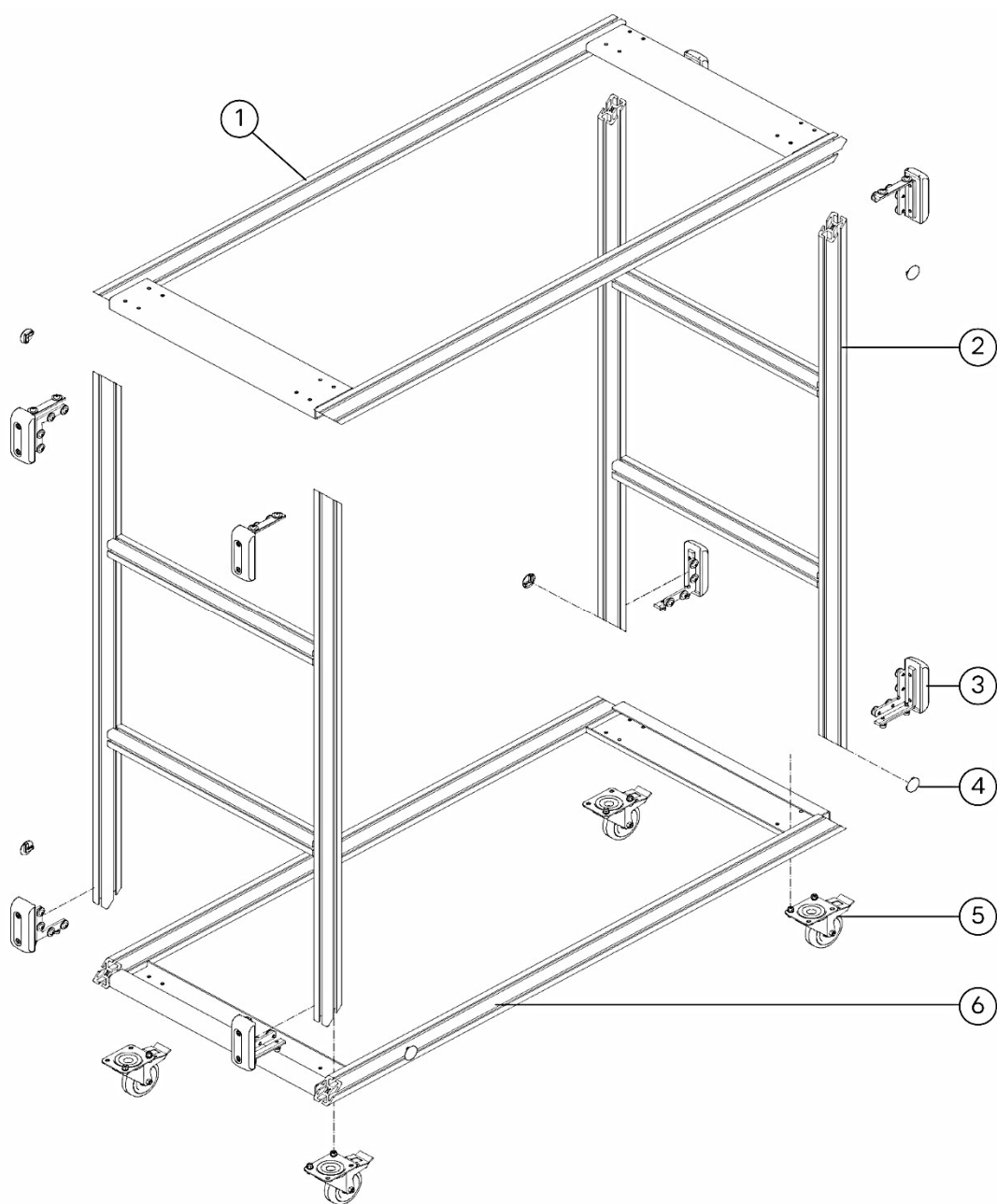


Figure 4: Assembling the frame

- |   |                                   |   |                      |
|---|-----------------------------------|---|----------------------|
| 1 | Top frame element                 | 4 | Plastic cap          |
| 2 | Side frame element                | 5 | Wheel with brake     |
| 3 | Bumper with metal corner supports | 6 | Bottom frame element |

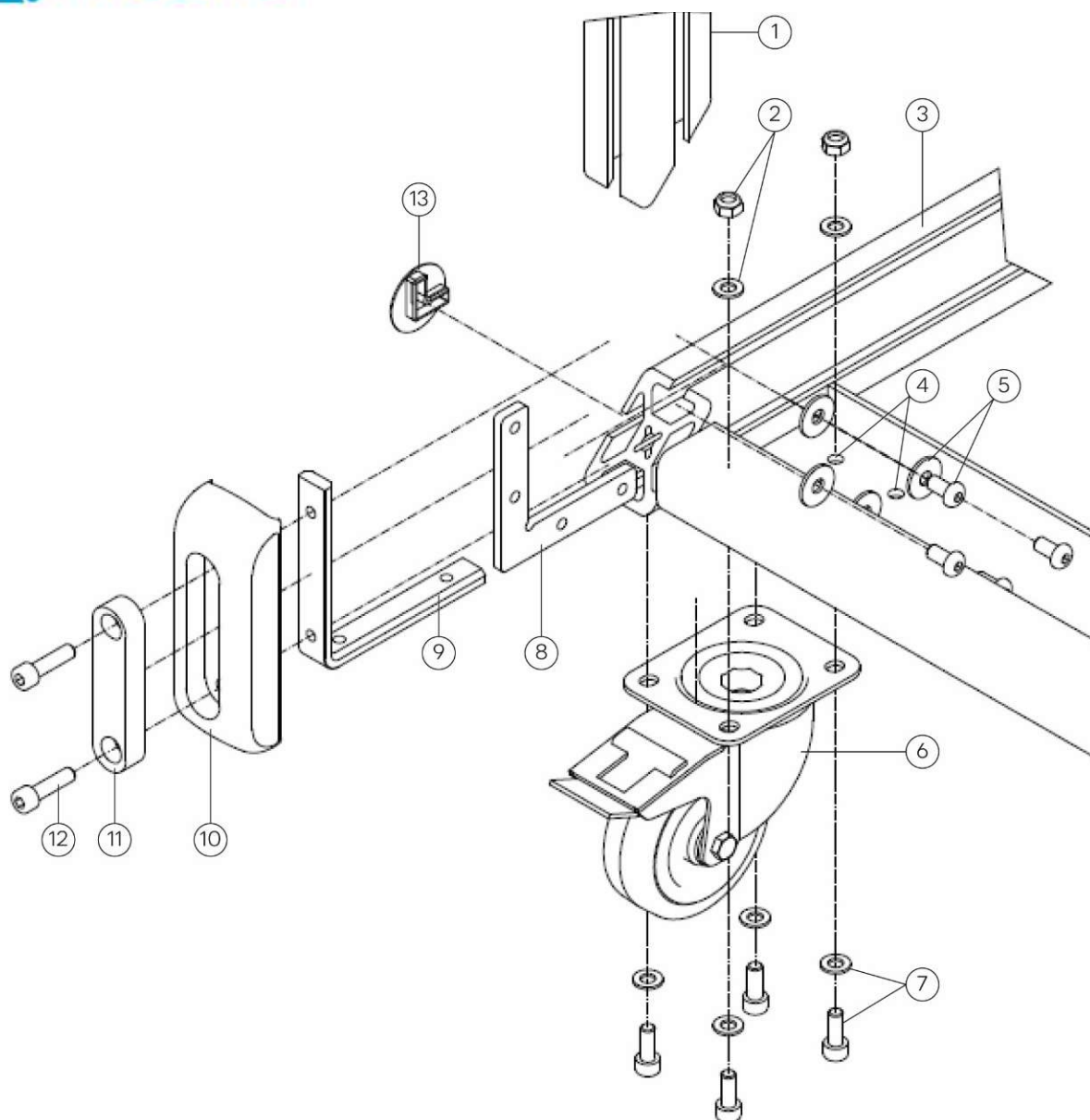


Figure 5: Detail of frame corner assembly

- |   |   |    |                                   |
|---|---|----|-----------------------------------|
| 1 | Side frame element                              | 8  | Flat steel profile                |
| 2 | Nuts and washers for wheel mounting plate bolts | 9  | L-shaped steel profile            |
| 3 | Bottom frame element                            | 10 | Bumper                            |
| 4 | Holes for wheel mounting plate bolts            | 11 | Plastic insert                    |
| 5 | Bolts and washers for flat steel profile        | 12 | Bolts M8x30 for items 9 / 10 / 11 |
| 6 | Wheel with mounting plate                       | 13 | Plastic cap                       |
| 7 | Wheel mounting plate bolts M8x20 and washers    |    |                                   |

The description below applies to the frame of the FlexCart. The top and bottom frame elements (items 1 and 6 in Figure 4) are identical and can be used in both positions. Figure 5 shows the frame with a 100-mm (3.94-in) wheel; the plate for the 160-mm (6.30-in) wheels is rotated by 90°. For details on assembling the wheel variants, see Section 7.3.1. The help of a second person is required to assemble the frame. The item numbers used in the description refer to Figure 5.

# **CAUTION**

## **PERSONAL INJURY HAZARD**

The edges of the profiles that are cut at an angle of 45° could be very sharp. Wear protective gloves to prevent hand injuries when handling them.

Proceed as follows to assemble the frame of the FlexCart:

1. Insert the flat steel profile (item 8) into the inner profile channel and the L-shaped steel profile (item 9) into the bottom profile channel of the bottom frame element (item 3) as shown in Figure 5.
2. Position the wheel beneath the holes (item 4) in the bottom frame element.
3. Insert the wheel mounting plate bolts (item 7) from beneath and fasten the 2 bolts on the inner side using the nuts and washers (item 2).
4. Fasten the L-shaped steel profile (item 9) in place in the bottom frame element by tightening the 2 wheel mounting plate bolts on the outer side.

When steps 1 to 4 have also been completed on the right-hand side of the side frame element:

5. Slide the side frame element (item 1) over both of the profiles (items 8 and 9), which are pointing upwards.
6. Fasten the flat steel profile in the side frame element with the bolts and washers (item 5).
7. Insert the 2 bolts (item 12) into the side frame element through the plastic insert, the bumper and the L-shaped steel profile (items 11, 10 and 9) and tighten them.  
NOTE: The bumper can only be installed in 1 direction, with the lip fitting over the bottom or top edge of the FlexCart profile.
8. Repeat steps 1 to 7 on the other side of the cart.
9. Insert the plastic caps (item 9 in Figure 1) into the channels of the side, top and bottom frame elements at the corners.
10. Mount the panel for an inventory list using the special nuts with spring and countersunk head bolts (M4x14) as shown in Figure 6 below. The magnetic frame can be fastened to the panel to hold a piece of paper such as an inventory list in place.  
The panel for an inventory list can be mounted vertically or horizontally.

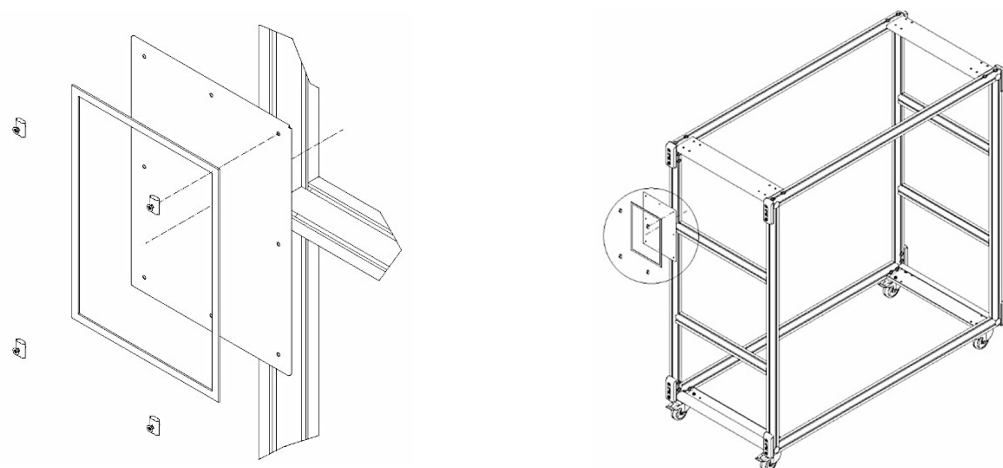


Figure 6: Assembling the metal panel (vertical assembly shown here)

With the exception of the steps involving the wheels, the procedure for assembling the top frame element (item 1 in Figure 1) is identical.

Once the frame is complete, the accessories can be assembled as needed (see Section 8).

### 7.3.1 Assembling the wheel variants

The 100-mm (3.94-in) wheels are assembled as described in steps 2 to 4 in Section 7.3. In step 3, the bolts for these wheels are inserted into the holes (item 4 in Figure 5) closest to the side extrusion of the bottom frame element, as shown below.

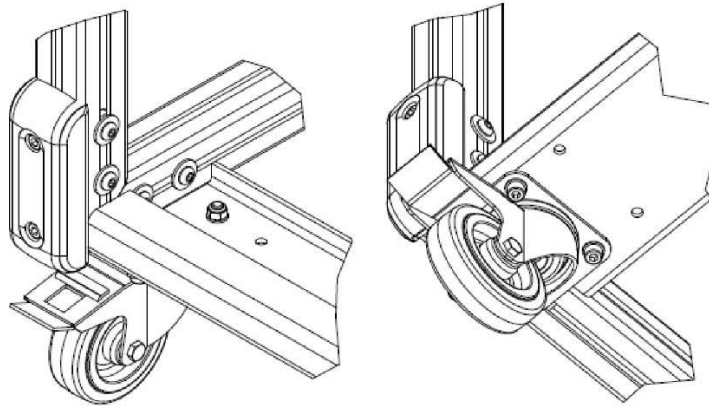


Figure 7: Position of bolts and nuts for 100-mm (3.94-in) wheels

The 160-mm (6.30-in) wheels are assembled as described in steps 2 to 4 in Section 7.3. In step 3, the bolts for these wheels are inserted into the holes (item 4 in Figure 5) furthest away from the side extrusion of the bottom frame element, as shown below.

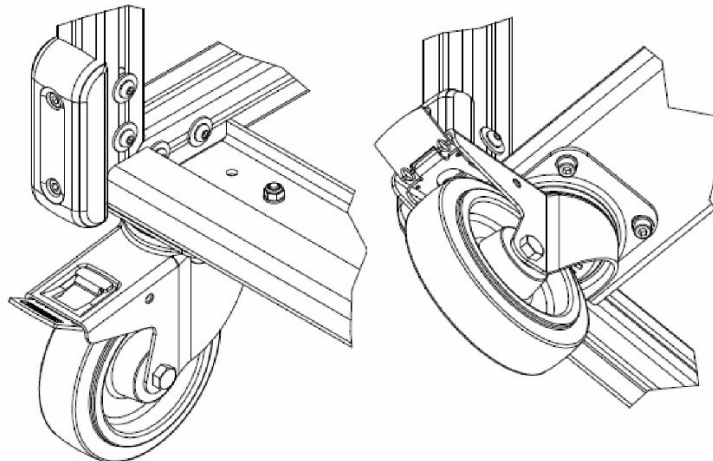


Figure 8: Position of bolts and nuts for 160-mm (6.30-in) wheels

### 7.4 Disassembling a FlexCart

Before disassembling the PROLYTE FlexCarts and their elements, check them for any damage according to the criteria in Section 10. Mark a damaged PROLYTE FlexCart or element and, if necessary, discard it.

Disassembly is carried out in the reverse order of assembly.



## 8 Approved accessories

### 8.1 FlexCart rack set – left and right



Figure 9: FlexCart rack set – left and right

The FlexCart rack set can be used either with 1 set (2 racks) at each end or with 1 set in total (1 rack at each end) – this is important for light bars due to the different sizes of lights, and also for the cable tubes, which can be installed horizontally with 2 racks or vertically with 1 rack.

If the decks for boxes are used together with any other accessories, the racks must be installed first; they cannot be installed afterwards without having to remove the decks beforehand.

If 1 set of racks is installed at each end, the racks must be installed with the combs pointing upwards and outwards to either side. If only 1 set of racks is installed, the combs must point upwards and outwards in the same direction.

#### 8.1.1 Assembling and disassembling

Proceed as follows to install the FlexCart rack set:

1. Hook the angled ends of the racks under the folds in the top and bottom frame elements.
2. Move the racks to the required position and fasten them loosely in place with the bolts at the top and bottom.
3. Insert the special nuts with springs into the channels of the horizontal profiles and adjust them to the correct position using a screwdriver or similar tool.
4. Fasten the racks firmly to the horizontal profiles of the side frames using M8x16 Allen screws.

The racks are installed and ready for mounting the accessories.

Disassembly is carried out in the reverse order of assembly.

### 8.2 FlexCart decks for boxes

The dimensions for assembling the L-profiles and T-profiles are shown below in Figure 10.



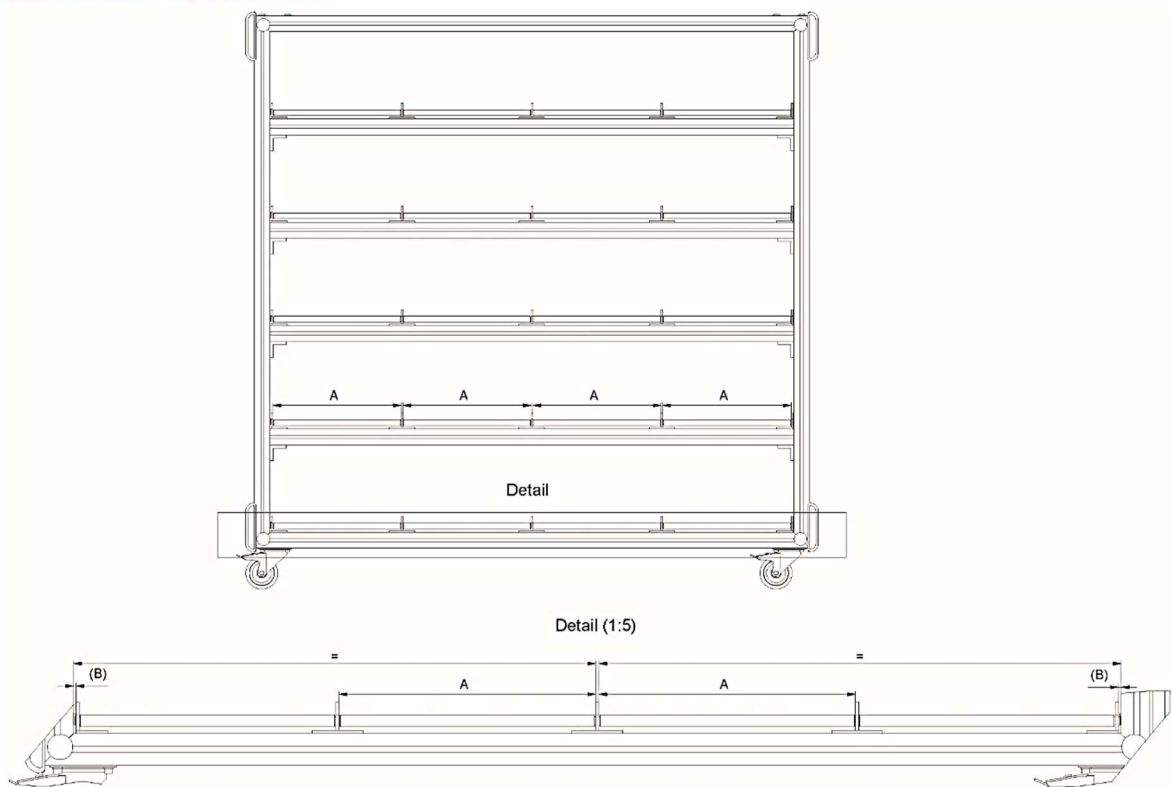


Figure 10: Dimensions for L- and T-profiles

A = 403 mm (15.87 in)

B = 4 mm (0.16 in)

### 8.2.1 FlexCart decks for boxes – bottom level

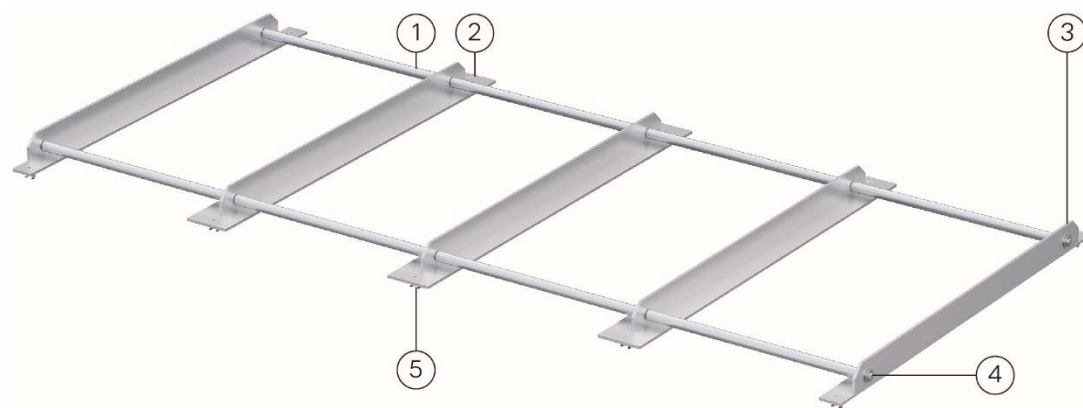


Figure 11: FlexCart deck for boxes – bottom level

- |   |                |   |   |
|---|----------------|---|---|
| 1 | Aluminium tube | 4 | Steel rod and retaining ring for shafts |
| 2 | T-profile      | 5 | Countersunk head bolt and special nut   |
| 3 | L-profile      |   |   |

#### 8.2.1.1 Assembling and disassembling

Proceed as follows to assemble the FlexCart deck for boxes – bottom level:

1. Position the special nuts in the profile channels of the bottom frame element (item 7 in Figure 1) and adjust them to the correct position using a screwdriver or similar tool.

2. Position the L-profiles at either end and space the 3 T-profiles evenly over the length of the bottom frame element, as shown in Figure 10.
  3. From the short side of the FlexCart, insert the steel rods through the first L-profile.
  4. Mount the aluminium tubes on both steel rods and insert the steel rods through the first T-profile.
  5. Repeat this process until the steel rods have been inserted through the final L-profile at the other end of the FlexCart.
  6. Secure the steel rods at both ends with the retaining rings for shafts.
  7. Fasten the T-profiles and the L-profiles to the bottom frame element using countersunk head bolts.
- You can now place boxes on the deck or install the upper-level decks.

Disassembly is carried out in the reverse order of assembly.

### 8.2.2 FlexCart deck for boxes – upper level

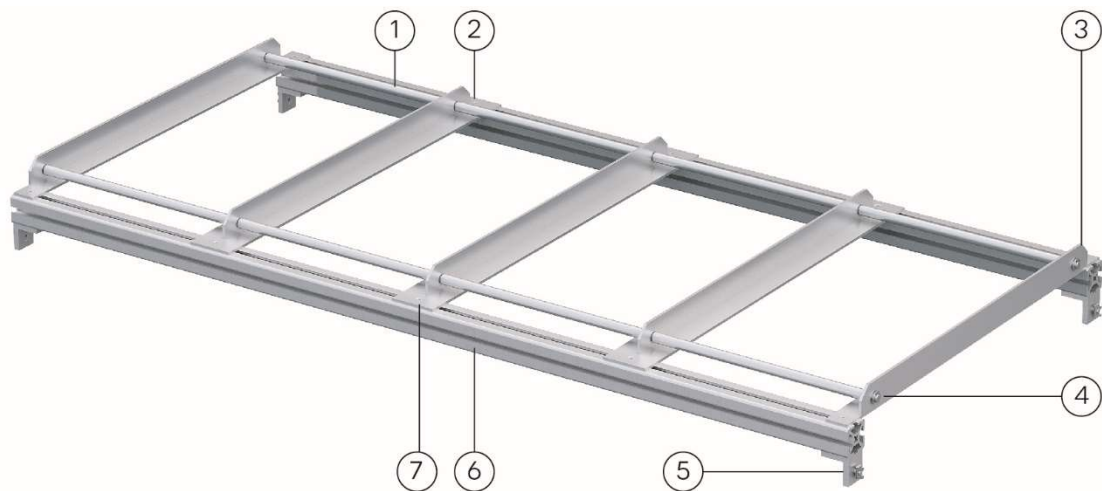


Figure 12: FlexCart deck for boxes – upper level

- |   |   |   |                                       |
|---|---|---|---------------------------------------|
| 1 | Aluminium tube                          | 5 | Bracket                               |
| 2 | T-profile                               | 6 | Side profile                          |
| 3 | L-profile                               | 7 | Countersunk head bolt and special nut |
| 4 | Steel rod and retaining ring for shafts |   |                                       |

#### 8.2.2.1 Assembling and disassembling

Proceed as follows to assemble the FlexCart deck for boxes – upper level:

1. Fasten the brackets (item 5 in Figure 12) to the 4 vertical profiles of the side frame elements (item 2 in Figure 1) using the special nuts and countersunk head bolts.
- NOTE: For the assembly dimensions of the brackets, see Figure 13 below.
- You can check these dimensions using a tape measure.

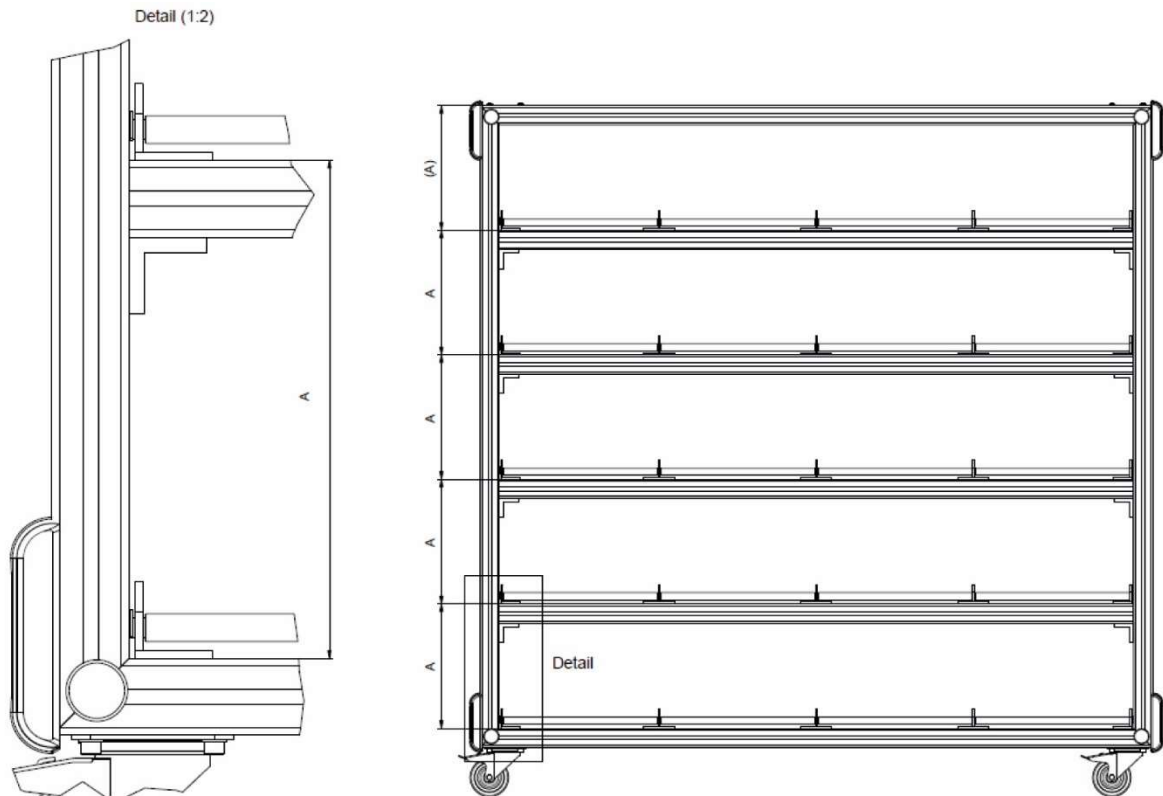


Figure 13: Dimensions for assembling brackets for upper decks

A = 324.4 mm (12.77 in)

2. Position the side profiles (item 6 in Figure 12) and fasten them to the brackets using the special nuts and countersunk head bolts.
3. Position the special nuts in the profile channels of the side profiles and adjust them to the correct position using a screwdriver or similar tool.
4. Position the L-profiles (item 3 in Figure 12) at either end and space the 3 T-profiles (item 2 in Figure 12) evenly over the length of the side profiles, as shown in Figure 10.
5. From the short side of the FlexCart, insert the steel rods (item 4 in Figure 12) through the first L-profile.
6. Mount the aluminium tubes (item 1 in Figure 12) on both steel rods and insert the steel rods through the first T-profile.
7. Repeat this process until the steel rods have been inserted through the final L-profile at the other end of the FlexCart.
8. Secure the steel rods at both ends with the retaining rings for shafts.
9. Fasten the T-profiles and the L-profiles to the side profiles using countersunk head bolts. You can now place boxes on the deck or install up to a maximum of 3 further upper-level decks.

Disassembly is carried out in the reverse order of assembly.

### 8.3 FlexCart light bar



Figure 14: FlexCart light bar

#### 8.3.1 Assembling and disassembling

Proceed as follows to assemble the FlexCart light bar:

1. Release the knurled knobs at both ends of the FlexCart light bar.
2. Insert the rod of the FlexCart light bar into the combs of the racks at both ends of the FlexCart, making sure that the FlexCart light bar is level.
3. Tighten the knurled knobs at both ends of the FlexCart light bar.  
Lights can now be attached to the FlexCart light bar using clamps.

Disassembly is carried out in the reverse order of assembly.

### 8.4 FlexCart tube for cable holders



Figure 15: FlexCart tube for cable holders

The FlexCart tube for cable holders can be assembled with the end plates positioned horizontally if 2 sets of racks are fitted or vertically if only 1 set of racks is fitted on the FlexCart. The various holes in the end plates enable the FlexCart tube for cable holders to be assembled in various positions.

#### 8.4.1 Assembling and disassembling

Proceed as follows to assemble the FlexCart tube for cable holders:

1. Release the nuts for the knurled knobs at both ends of the light bar. The bolt must also be removed completely on either the left- or the right-hand side.
2. Insert the rods of the FlexCart tube for cable holders into the combs of the racks at both ends of the FlexCart, making sure that the FlexCart tube for cable holders is level.
3. Re-insert the bolts on either the left- or the right-hand side and tighten the nuts for the knurled knobs at both ends of the FlexCart tube for cable holders.  
Cable holders can now be mounted on the FlexCart tube for cable holders.

Disassembly is carried out in the reverse order of assembly.

## 8.5 FlexCart cable holder



Figure 16: FlexCart cable holder

### 8.5.1 Assembling and disassembling

Proceed as follows to assemble the FlexCart cable holders:

1. Unscrew the nut from the threaded connection at the bottom of the bracket and remove the bolt.
2. Place the bracket over the previously installed FlexCart tube for cable holders in the required position.
3. Re-insert the bolt and tighten the nut.  
You can now hang your cables from the arms of the FlexCart cable holder.

Disassembly is carried out in the reverse order of assembly.

## 8.6 FlexCart protective cover



Figure 17: FlexCart protective cover

The FlexCart protective cover, which is made of nylon fabric, protects the FlexCart and its contents from rain and dust. It can be fitted by 1 person. Both long sides can be opened and closed with 2 zips; the fabric can then be rolled up and secured with 2 clips to access the contents. The fastener of each zip can be locked using the eyelet at the bottom in the cover. As the panel for the inventory list (see item 3 in Figure 1) is no longer visible when the cover is fitted, the outer side of the cover is equipped with a transparent pouch for a content list.

### 8.6.1 Fitting and removing

The FlexCart protective cover is fitted by opening both of the zips on one side and slipping it over the FlexCart. The cart can then be loaded, or its contents can be removed, and the cover closed by fastening the zips again. The zips in the cover can be locked, if needed.

Removal is carried out in the reverse order of fitting.

## 9 FlexCart sets

### 9.1 PROLYTE FlexCart for lights



Figure 18: PROLYTE FlexCart for lights

The PROLYTE FlexCart for lights is supplied as a complete set and consists of the following:

- 1x PROLYTE FlexCart frame with 100-mm (3.94-in) wheels
- 2x set consisting of left and right rack for FlexCart
- 4x FlexCart light bar for connecting to racks

#### 9.1.1 Assembling and disassembling

Proceed as follows to assemble the PROLYTE FlexCart for lights:

1. Assemble the FlexCart frame as described in Section 7.3.
2. Assemble the FlexCart rack sets at both ends of the frame as described in Section 8.1.1. Make sure that the racks are assembled correctly, with the combs pointing upwards and outwards.
3. Assemble the required number of light bars, depending on the size of your lights, as described in Section 8.3.1.
4. You can then attach your lights and transport and/or store them.

Disassembly is carried out in the reverse order of assembly.

## 9.2 PROLYTE FlexCart for boxes



*Figure 19: PROLYTE FlexCart for boxes*

The PROLYTE FlexCart for boxes is supplied as a complete set and consists of the following:

- 1x PROLYTE FlexCart frame with 100-mm (3.94-in) wheels
- 1x FlexCart deck for boxes – bottom level incl. fastening set
- 4x FlexCart deck for boxes – upper level incl. fastening set for 20 boxes

### 9.2.1 Assembling and disassembling

Proceed as follows to assemble the PROLYTE FlexCart for boxes:

1. Assemble the FlexCart frame as described in Section 7.3.
2. Assemble the FlexCart deck for boxes – bottom level as described in Section 8.2.1.1.
3. Assemble the FlexCart decks for boxes – upper level as described in Section 8.2.2.1.
4. Insert the boxes and fasten them in place with the fastening sets.
5. You can then fill the boxes with the required equipment and transport and/or store them as needed.

Disassembly is carried out in the reverse order of assembly.



### 9.3 PROLYTE FlexCart for boxes, lights and cables



Figure 20: PROLYTE FlexCart for boxes, lights and cables

The PROLYTE FlexCart for boxes, lights and cables is supplied as a complete set and consists of the following:

- 1x PROLYTE FlexCart frame with 100-mm (3.94-in) wheels
- 1x FlexCart deck for boxes – bottom level incl. fastening set
- 2x set consisting of left and right rack for FlexCart
- 1x FlexCart tube for cable holders for connecting to racks
- 5x FlexCart cable holder for connecting to FlexCart tube for cable holders
- 2x FlexCart light bar for connecting to racks
- 4x box

#### 9.3.1 Assembling and disassembling

1. Assemble the FlexCart frame as described in Section 7.3.
2. Assemble the FlexCart rack sets at both ends of the frame as described in Section 8.1.1. Make sure that the racks are assembled correctly, with the combs pointing upwards and outwards.
3. Assemble the FlexCart deck for boxes – bottom level as described in Section 8.2.1.1.
4. Insert the boxes and fasten them in place with the fastening sets.
5. Assemble the required number of FlexCart light bars, depending on the size of your lights, as described in Section 8.3.1.
6. Assemble the FlexCart tube for cable holders and mount the FlexCart cable holders on it, as described in sections 8.4.1 and 8.5.1.
7. You can then fill the boxes with the required equipment and transport and/or store them along with your lights and cables.

Disassembly is carried out in the reverse order of assembly.



## 10 Discard criteria for individual components

All discard criteria must be taken into consideration when performing inspections.

### NOTICE

All of the FlexCart components can be replaced, meaning that the FlexCart does not have to be discarded in its entirety. If in doubt when assessing individual damage, contact the manufacturer, supplier or a qualified person.

Discard criteria can include, but are not limited to, the following:

- Elements that do not engage correctly.
- Damaged or bent profiles.
- Deformation of the FlexCart frame elements and their components.

Part	Failure symptoms
FlexCart frames	<ul style="list-style-type: none"><li>• Welds that are cracked or show other irregularities</li><li>• Excessive corrosion whereby the cross-sectional area of the component is reduced by more than 10%</li><li>• Scratches or signs of abrasion on the surface of the extruded profiles that reduce the wall thickness by more than 25% or the cross-sectional area of the component by more than 10%</li><li>• Indentations/dents deeper than the wall thickness</li><li>• Excessive bending of profiles by more than the length divided by 300. In this case, this means the length of the element between one connection and the next</li></ul>
General for all extrusions	<ul style="list-style-type: none"><li>• Fractures</li><li>• Cracks</li><li>• Holes appearing after the FlexCart has been brought into use</li></ul>

## 11 Warranty

For a period of 24 months, we undertake to repair any damage attributable to faulty materials or workmanship free of charge provided that the product is forwarded freight paid to our factory or one of our contract service organisations.

The warranty period begins on the date of delivery, proved by a purchase receipt such as an invoice, a delivery note or a copy of one of these.

The warranty is applicable to new products only.

The warranty does not cover damage due to transport, negligent handling, overload or parts subject to normal wear and tear. Nor does it cover damage resulting from misuse due to non-observance of the instructions in this manual.

The fitting of replacement parts not supplied by us or modifications of our design by third parties also invalidate the warranty.

Warranty repairs do not renew or extend the warranty period.

Contact details:  
PROLYTE BV.  
Industriepark 9  
9351 PA Leek  
The Netherlands  
T +31 594 85 15 15  
[sales@prolyte.com](mailto:sales@prolyte.com)