



Photo: Install Profi, Russia

SYSTEM DESCRIPTION

The MPT Roof is a tower-based structure with a pitched roof, a design which guarantees optimum strength. Primarily configured from standard trusses, the MPT Roof is available in four different sizes. However, the unrivalled flexibility of the system affords nearly 40 calculated building varieties or setup possibilities for your MPT Roof. At ProlyteSystems, we are aware that every season and every event brings different demands, and accordingly we have designed the MPT Roof to accommodate an extraordinary range of applications.

BASIC TRUSSING

- Tower - MPT masts system
H30V truss
- Grid - H30D truss
H40V truss

INCLUDING

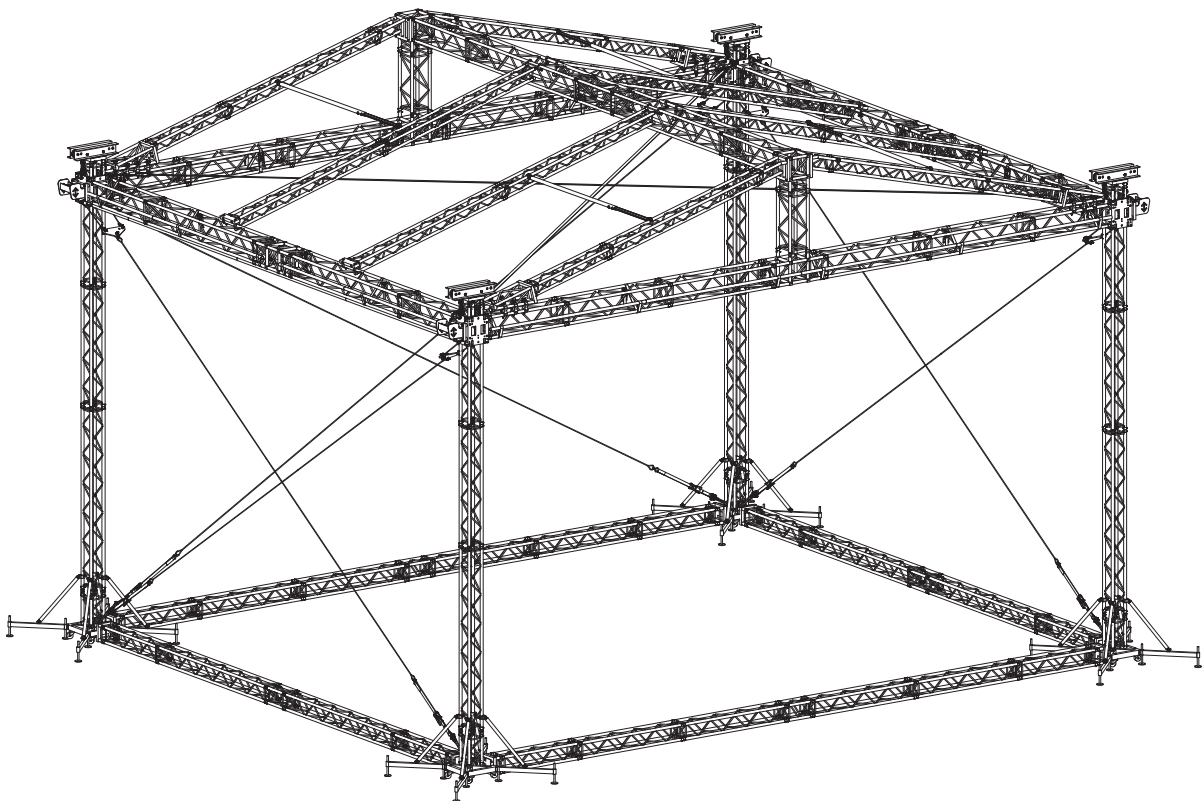
- Tension gear and steel wires
- Structural report I

ROOF STRUCTURE	
Towers	4 x MPT-tower, mast sections of H30V truss
Main grid	H30D and H40V truss
TECHNICAL SPECIFICATIONS - MPT ROOF	
Dimensions	12 x 10 m, 10 x 8 m (39'4" x 32'9"), (32'9" x 26'3")
Loading capacity (UDL)	12 x 10 m approx. 3950kg 10 x 8 m approx. 4500kg
Total weight	12 x 10 m approx. 2400kg 10 x 8 m approx. 2100kg
Transportation volume	12 x 10 m approx. 40m ³ 10 x 8 m approx. 32m ³
Max. wind speed	28,4 m/s, 63,3 mph

OPTIONS	
Canopy	side, back and top
Canopy colour	standard: outside grey, inside black (other colours possible)
Soundwings	Optional (yes / loading 1000 kg each)
Ballast	several possibilities on request depending on construction and wind speed
Staging	Prolyte stage elements, EasyFrame B or Probeam combined with a scaffolding stage
Cantilever	yes
Prolyft hoist (12x10 MPT roof without sound-wings) and accessories	<div> <div>4x PAE-1000DC-0020</div> <div>4x PAE-A-FC1000</div> <div>1x PLA-33-20</div> <div>2x PLA-30-10</div> <div>1x PAE-C4DC-10</div> </div> <div> <div>1x PLA-41-001</div> <div>4x PAE-A-50-010</div> <div>2x PLA-30-20</div> <div>1x PLA-34-02</div> </div>
Prolyft hoist (12x10 MPT roof with sound-wings) and accessories	<div> <div>6x PAE-1000DC-0020</div> <div>6x PAE-A-FC1000</div> <div>2x PLA-33-20</div> <div>2x PLA-30-10</div> <div>1x PAE-C8DC-10</div> </div> <div> <div>1x PLA-41-001</div> <div>4x PAE-A-50-010</div> <div>2x PLA-30-20</div> <div>2x PLA-34-02</div> </div>

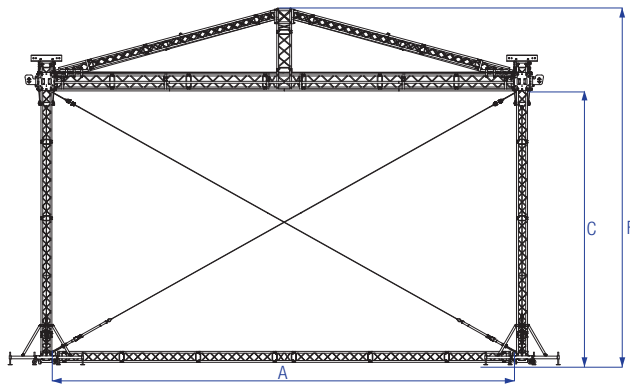


Photo: Southbeats festival, project by Impact Production Services (IPS)

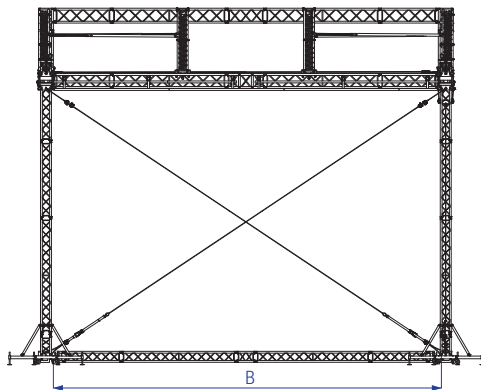




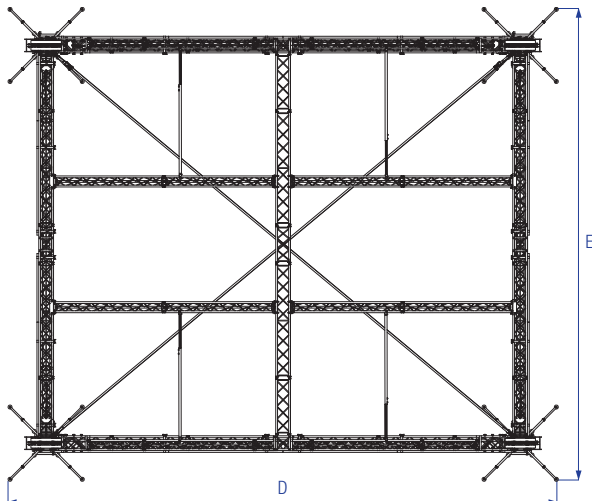
Front view



Side view



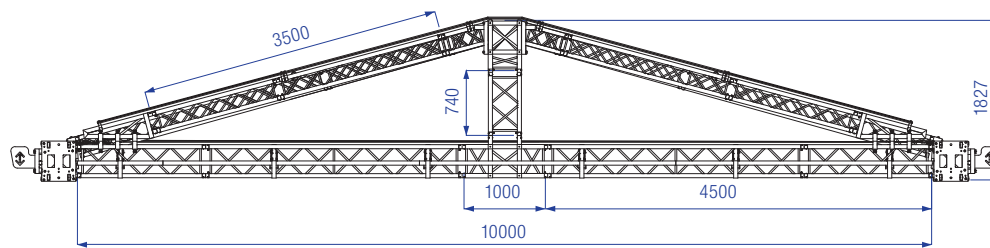
Top view



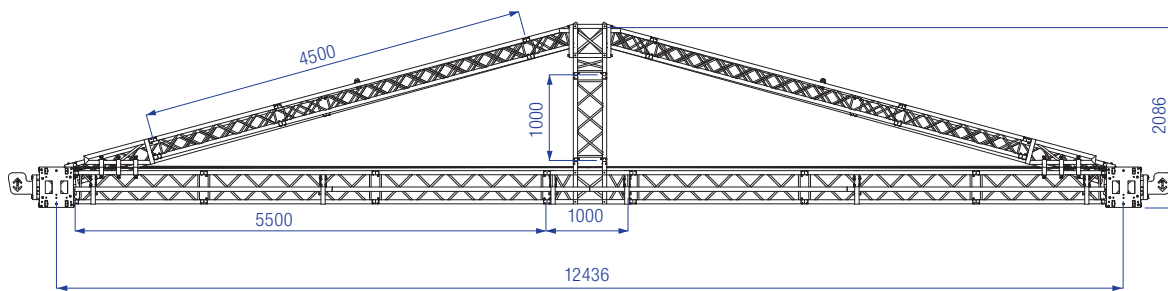
MPT ROOF SYSTEM		Inside						Overall					
Stage measurements		A		B		C		D		E		F	
12 x 10 m	39'4" x 32'9"	12,15 m	39'86"	10,15 m	33'30"	7,21 m	23'65"	12,72 m	41'73"	10,72 m	35'17"	9,35 m	30'67"
10 x 8 m	32'9" x 26'3"	10,15 m	33'30"	8,15 m	26'73"	7,21 m	23'65"	10,72 m	35'17"	8,72 m	28'60"	9,10 m	29'85"

MPT ROOF

MPT ROOF 10 x 8 m



MPT ROOF 12 x 10 m



all measurements in mm