

Concrete Ballast Base

Product Specific Brochure

www.prolyte.com

PROLYTE Concrete Ballast Base

Features

The concrete ballast base is made of steel-reinforced concrete, allowing it to withstand heavy loads while remaining resistant to damage.

Their high versatility enables the individual blocks to be stacked or connected horizontally to form one large block of any weight. The connectors allow for both horizontal and vertical connections. Due to its compact dimensions (800x800x400 mm for the 500-kg base and 1200x1200x400 mm for the 1250-kg base) and stackability, transportation is simple and efficient. The lifting point in the middle of the base or the forklift pocket can be used for handling.

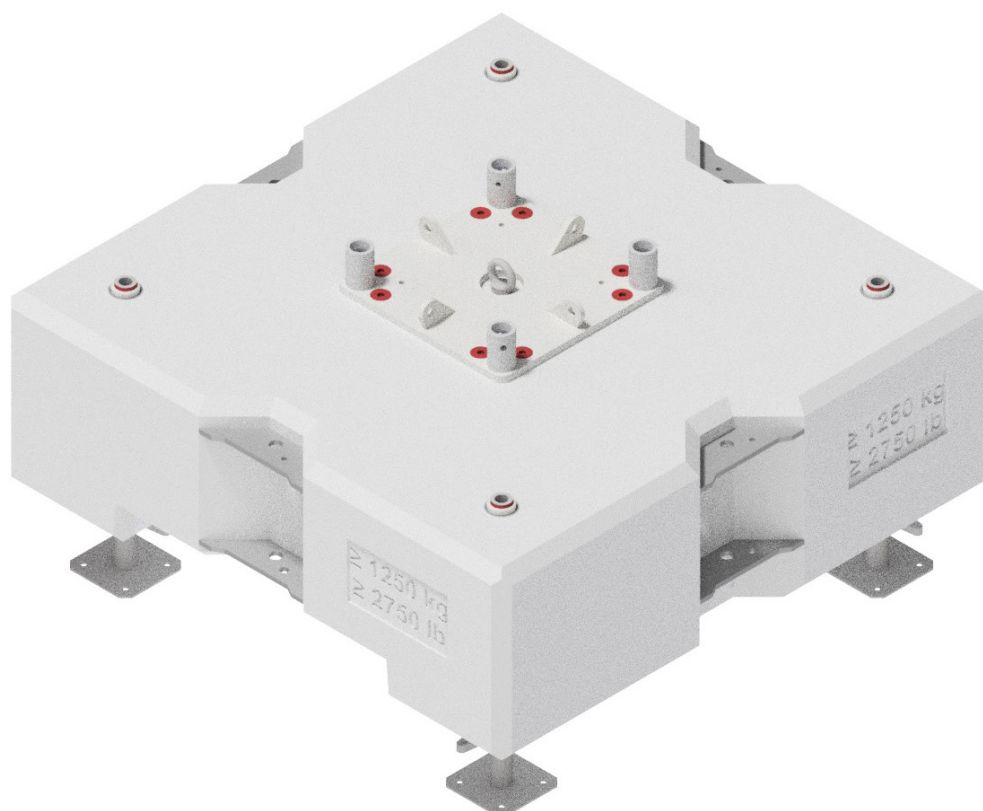
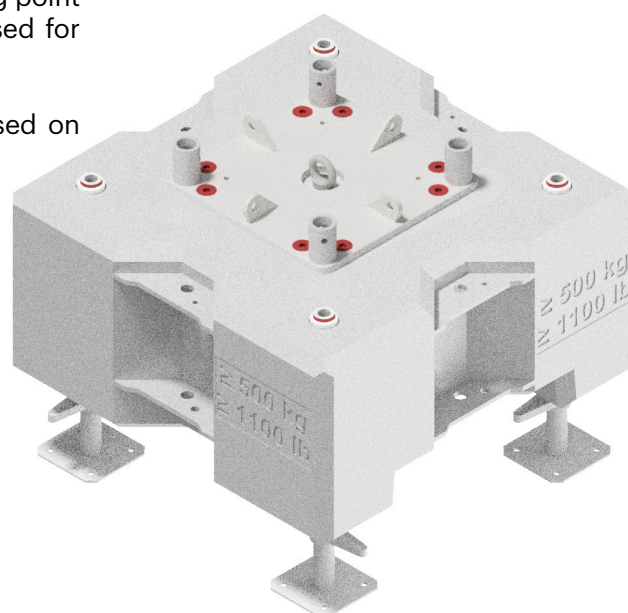
Adjustable "spindles" with a large contact area can be used on uneven surfaces.

Advantages

- Compact 800x800x400-mm or 1200x1200x400-mm steel-reinforced concrete block
- 500 kg or 1250 kg weight
- Adjustable spindles
- For indoor and outdoor use
- Lifting point in COG
- Base plate with lugs for steel wires
- Natural concrete look

Technical specifications – Ballast Base

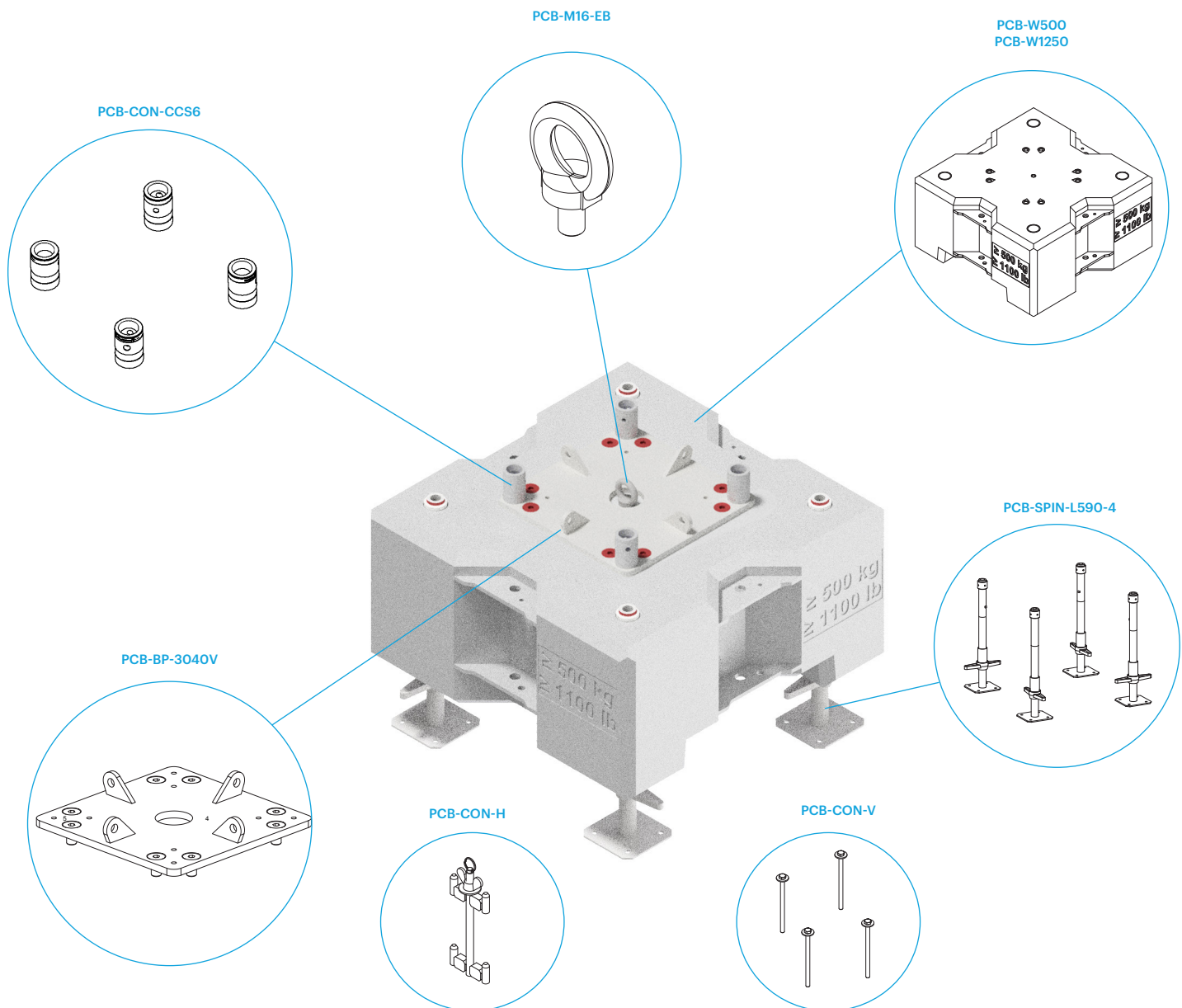
Types	500 / 1250 kg
Alloy	Concrete / steel



PROLYTE Concrete Ballast Base

Prolyte Concrete Ballast

Item Number	Code	Description
111600347	PCB-W500	Ballast base weight 500 kg
111600348	PCB-W1250	Ballast base weight 1.250 kg
111600349	PCB-BP-3040V	Ballast base baseplate for square 30 and 40 series truss
111600350	PCB-CON-H	Ballast base connection anker
111600351	PCB-CON-V	Ballast base vertical bolt connection set, 4 pieces
111600352	PCB-SPIN-L590	Spindle for ballast base length 59 cm
111600353	PCB-SPIN-L590-4	Set of 4 spindles for ballast base length 59 cm
111600354	PCB-CON-CCS6	Set of 4 female receivers incl. bolts and R-clips
111600355	PCB-SPIN-SPAN	Spindle spanner
111540350	PCB-M16-EB	Lifting eye M16 for ballast base





Prolyte B.V.
Industriepark 9
9351 PA Leek
Netherlands

T: +31-594 851 515
sales@prolyte.com



www.prolyte.com